

"I have several projects going with your beautiful yarn. It's such a treat to work with!"



New Exclusive Luxury Superwash Blends!

Bella ~ Super soft—a bulky wt smooth plied yarn that has a soft subtle sheen. A wonderful blend of 70% Superwash Merino wool/20% Silk/10% Alpaca. Sk are avail in 2 sizes ~ approx 150 gm 2-ply~165 yd; 3-ply ~110 yd Needles: 10 ~ 13 \$35

Baby Bunny ~ Amazing softness~fine, 60% Superwash Merino wool/20% Angora/20% Nylon. \$25

Twinkle Toes ~ Silky, super soft, 60% Superwash Merino wool/20% Silk/20% Nylon. \$25

Peruvian Sock ~ Fine, super soft, 60% Superwash Merino wool/20% Silk/10% Alpaca/10% Nylon. \$25

Can be used in place of SuperSock & Baby or Silk & Ivory. Approx 100 gm & 440 yds Hand-wash. Socks ~ 1 sk Baby Sweater: 1-2 sk Tank Top ~ 2 sk Sweater ~ 2-3 sk Needles: 1 to 5

Patterns can be ordered for \$7.50 or can be downloaded from website for \$6 each.

Shopping cart is available at www.tessyarns.com! We're adding new content regularly.

"Your yarn has always been the best. Looking forward to ordering via the net since I ... can't always go to the shows."

* FINE PRINT *

Please order sufficient amounts. Dye lots can be difficult to match. Please call for advice on amount needed if you're unsure. I have several patterns I would be happy to recommend. Custom orders/colors are fine, very welcome even, but take longer. Please be patient! Hand dyed yarns are more time consuming to produce.

Our vibrant colors are part of what makes our yarns unique. With such rich and intense colors, there may be some color transfer. You may need to wash before using to prevent this. You may hand wash or dry-clean. I prefer washing with a mild detergent in a net bag in the washing machine. Fill with cool water, soak, spin out. Repeat. Do **NOT** agitate. Add a little fabric softener to rinse cycle. Wash colors separately. Lay flat to dry. Store yarns & garments away from direct sunlight.

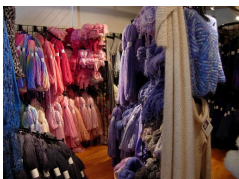
You may return any unused skeins of yarn any time for credit only, with the exception of custom orders & certain sale yarns which may not be returned. This is to encourage you to buy enough yarn initially to complete your project. No refunds.

We appreciate your considering our yarns. Please let us know of any ideas that would help improve our service and/or products.

"Thank you so much for all of your products – they truly make knitting even more relaxing and fulfilling than it is with any other yarn!"

Ribbon Winding Instructions: Following the directions will make it simple. You need a real, live person or a swift turned sideways to wind ribbon. Skein needs to be kept under tension.

Please don't try to use the back of a chair, etc. Before removing strings, hold 2 strings to find center then bounce around on your arms to straighten out any loose strands. Wind yarn tightly so it does not fall off ball. If yarn becomes tangled, try to tease it out gently. Place in zip-lock bag when knitting. The yarn will spiral between ball & your work, but it does not matter when knit. Use fabric glue such as Fray-chek to secure ends.



Tess' Designer Yarns

Retail Shop ~ 1 Spring St Mail ~ 4 City Center
Portland, Maine 04101

207-460-9276 (YARN)

E-mail: tess@tessyarns.com ~ www.tessdesigneryarns.com

Fine Fibers in Exceptional Colors For Over Twenty~Five Years

New Yarns!
Baby Alpaca & Silk,
Bella, Silk Tape & more...



Check our prices & yardage-
Great value!!

Tess' DESIGNER YARNS began 30 years ago as Pigeon Hill Farm. We had many beautiful Romney sheep with long lustrous fleeces on our ocean-front farm. With the arrival of Tess in 1986, there wasn't enough time & energy for everyone. Somebody had to go & it wasn't going to be Tess! So I traded my ewes for TONS of fleeces & my rams went on an extended working vacation. Now, Tess & the company I named for her are my priorities. Tess has modeled for our ads & at shows across the country. She keeps me advised of current fashion & color trends.

We offer kits and yarns in exceptional colors at reasonable prices. Hand dyed yarns insure a unique garment. We are fortunate to have such top designers as Ginger Luters, Lily Chin, Cindy Polfer, Jill Ramos, Sue Pedersen, Joan Dyer & others sharing their creativity!

Our high quality natural fiber yarns let you enjoy every aspect of creative playing - from the winding of the balls of soft luxurious yarn all the way through to the final pleasure of wearing your creations! We want you to be pleased with our yarns and will help you in any way we can to help insure your success. Enjoy! Melinda Bickford (Tess' mom)

* COLORS *

All yarns are dyed by one person ~ each batch is unique. I do not have formulas nor do I outsource my dyeing. I like to think this is an art ~ not suitable for mass production. If you need help choosing colors, please call ~I'd be glad to help! Colors listed are a starting point ~ many are not listed. Sometimes I have an idea what color way I want to create ~ sometimes I let the colors take me where they want to go. Inspiration comes from many sources, both internal & external. I experiment, I play! I have old favorites & new colors that keep it fun & interesting.

RAINFOREST- Soft/deep purple, blues, green

VIOLET- purple, solid or with blue tinges

BLUE/VIOLET - Deep cobalt blue/purple

COBALT- Royal to deep blue, solid or / violet tinges

LIME SPLASH - Lime to soft green to cobalt to violet

MAINE WOODS & WATERS- Deep blue & evergreen

CARIBBEAN WATERS- turq. blue with violet &/or teal

FLORIDA KEYS- Purple, cobalt, turquoise

BAHAMA BAY- Soft cobalt/turquoise

MERMAID LAGOON- Teal with blue &/or violet touches

BLUE HERON- silver gray to turq to violet NEW!

DESERT JEWEL- silver gray to turq to violet

PERIWINKLE- Soft lavender / blue

FAIRY WINGS- Soft blue or pink with lav. & cream

PETAL PINK- Soft pink

DUSTY ROSE- Muted, Victorian rose, pink

ROSE BLUSH- soft medium rosy pink

ITALIAN BRICK- rust, cinnamon

BLUE RAZZ- Deep mauve

PLUM DANDY- soft to deep variegated plum

POODLE SKIRT ~ pink shading into gray *NEW!

PEACHY KEEN~ seashell pink shading into gray

CORNFLOWER BLUE- Soft blue with violet cast

TWILIGHT- silver, violet into indigo/navy blue

NIGHT SHADES-Smoky shades of violet to indigo/navy

SILVER- Pale silver to light gray

BLUE STEEL - Deep bluish gray

BLACK- Soft charcoal to deep black

ENGLISH SHEEPDOG - black to gray to white

FROG KISSES- Yellow green with blue green "kisses"

HIBISCUS- soft -med warm rosy/pink, melon

SPRING GARDEN-Soft,pink,lav,blue,green,yellow,peach

CONFETTI-brights,fuchsia,purple,blue,green,yellow,orange

PAPAYA- Warm, buttery rosy peach

PEACH MELBA- Peach/ fuchsia/raspberry /violet

LEMON or LIME SOUFFLE- pale yellow or lime green

RED- Warm, earthy or cool, bright

OCEAN STORM- Deep, dark eucalyptus green

MIDNIGHT BLUE- Deep indigo, navy

MIXED BERRY- rich raspberry, blue swirls

EGGPLANT- Deep, dark purple

EUCALYPTUS- Pale, cool, light sage green

SEA BREEZE- Soft silvery green /soft silvery blue

LILAC- Soft lavender, violet

SEASHELL PINK- Soft peach, coral

MUSHROOM SOUFFLE- Soft hues—gray, taupe

COCOA BROWN - Soft to med cool brown

COFFEE BEAN - Rich, deep warm multi-hued brown

ANTIQUUE COPPER-copper with dk brown touches

AUBURN- Rich, chestnut brown to copper

BIRCH BARK - Soft grays & browns & cream

BUTTER PECAN - Oatmeal/warm amber tone

TAUPE- Soft beige, champagne

Limited Edition Colors...Metro, Redwood, Slate Forest, Mendocino Vineyard, Mango/Raspberry Sherbet, Lemon-grass, Enchanted Forest, Not in Kansas Anymore, Orange Sunshine, Caribbean Treasure, MahiMahi and more!



* Fine Hand Dyed Yarns *

Super Socks & Baby Yarn

Fine machine wash & dry yarn- great for socks, shawls & baby! This yarn is 80% Merino wool & 20% Nylon. It combines the softness & elasticity of Merino wool with the durability of nylon for socks made to be worn often! Approx 100 gm & 450 yd Socks/shawl/baby sweater: 1 sk Needles: 1-3 \$18

Superwash Merino Lace

Very fine & super soft—can be used in multiples or in combination with other yarns for fun with color. Mach Wash & Dry! 100% Merino wool Approx 50 gm & 500 yds \$10

Superwash Merino Petite

Fine super soft—can be used in place of Silk & Ivory. Machine Wash & Dry! 3-ply—100% Merino wool Appx 150 gm & 665 yds Sweater: 2-3 sk Needles: 3 to 5 \$30

Superwash Merino New ~ 4 oz sk ~ \$18 ~ limited colors

This worsted wt. yarn feels *so* good, you know it's Merino. The surprise is that it's also machine wash & dry! In a review in *Knitters'* magazine, the writer picked this yarn as her favorite among more than a dozen Superwash yarns. Approx. 285 yd & 4 oz / 8 oz, 560 yd skeins. Sweater: 5-6/2-3 sk Needles: 7 to 9 \$18/\$32

Superwash Merino Bulky

Super soft bulky—4 ply. Mach Wash & Dry! 100% wool Approx 8 oz & 210 yds \$32

Mohair & Merino

A very versatile yarn! Although it is a worsted weight, I have seen it knit from 4 to 6 stitches per inch. Mohair gives this yarn a nice luster and helps it to wear well with great stitch definition. A smooth yarn, it is a blend of 55% Mohair & 45% Merino wool. Skein approx. 8 oz & 490 yd Sweater: 2-3 sk Needles: 5 to 9 \$35

Petit Manan

1 ply Mohair & Merino~55% Mohair & 45% Merino wool. Skein approx. 4 oz & 490 yd Sweater: 4~5 sk Needles: 6 to 8 \$20

Grand Manan

Bulky version of Mohair & Merino~55% Mohair & 45% Merino wool. Skein approx. 8 oz & 325 yd Sweater: 4~5 sk Needles: 8 to 11 \$35

Angel Hair

A soft, finer brushed mohair. Skeins are approx. 9 oz and 787 yds. 78% Mohair, 13% Wool, 9% Nylon Sweater: 2 sk Needles: 7 - 10 \$50

Kid Mohair

An especially soft, fine mohair- nice alone or in combination with other yarns. knits quickly on big needles! Approx. 3.5 oz/ 450 yds (8 oz/ 1000 yards) 78% Mohair, 13% Wool, 9% Nylon Sweater:1-2(2-3)sk Needles: 5 to \$30/\$50

Microfiber Ribbon

The yarn has the look & feel of silk with the elasticity & machine washability of 100% nylon and a very flexible gauge - a great combination! Lots of yardage—skeins are approx. 150 gm & 333 yd. Sweater: 3 - 5 sk Needles: 4 - 9 \$25

Peruvian Dream ~ Super soft—a worsted wt smooth yarn that has a soft subtle sheen.

A wonderful blend of 70% Superwash Merino wool/20% Silk/10% Alpaca. Approx 150 gm & 410 yds Sweater: 3~5 sk Needles: 6 to 8 \$35

Prime Alpaca

This is a smooth yarn made from 100% prime alpaca. This very soft sport wt yarn feels like a cashmere cousin. Skeins are approx. 8 oz and 665 yards.

Sweater: 2 sk Needles: 4 - 6 Natural Shades \$30 Dyed \$35

Alpaca Lace New!

Fine, soft in lovely muted shades -100% Alpaca lace wt Approx. 550 yd / 50 gm \$15

Baby Alpaca & Silk NEW!

Very soft baby alpaca & silk~ so soft! A light wrst wt yarn - Approx 150 gm & 410 yards. Sweater: 3~4 sk Needles: 5 to 7 ~ \$35

Oruga

A textured yarn that looks like Welsh Wool but so soft because it's mostly alpaca. A bulky wt yarn - a blend of 62% Alpaca, 12% Wool, 3% Nylon! Skeins are approx 8 oz & 140 yards. Sweater: 4 - 5 sk Needles: 9 to 11 \$40

Petite Silk

Premium silk in a lace wt—very fine & super soft. Can be used singly or plied with other yarns. Approx 450 yd & 40 gm \$20

Silky Locks New ~ 4 oz sk ~ \$25 ~ limited colors

Boucle with pizzazz! A soft, silky yarn that is great by itself or mixed for texture & glow with other yarns. A luscious new bulky but light! wt yarn - a blend of 42% Mohair, 25% Silk, 25% Wool, 8% Nylon! Approx 8 oz & 400 yard skein. Sweater: 2-3 sk Needles: 9 - 11 \$50

Cascade Silk

Premium silk in sport wt & worsted wt plied yarns offer you a choice. Available in brilliant colors with incredible luster and softness. Approx. 150 grams 100% Silk Fine (Wrst) ~ 666 (333)yd Sweater: 2(4) Needles: 4 to 6 (7 to 9) \$60

Silk & Ivory

A light lovely yarn- 50% silk and 50% wool -it offers the light, silky softness of pure silk with the loft & elasticity of wool. A sport wt yarn suitable for all climates. Approx. 150 gm & 665 yd Sweater: 2 sk Needles: 3 - 6 \$55

Silk & Merino

One of our nicest yarns. A worsted wt blend of 50% Silk and 50% Merino wool. The soft twist ply improves wear while still feeling soft. Approx. 100 gm & 250 yd Sweater: 5-6 sk Needles: 7 to 9 \$35

Cultivated Silk & Wool

Though this yarn looks like pure silk (it glows!), it's a 50/50 blend of silk & merino - a lustrous soft, silky single ply wstd wt. A good choice to make something special! Approx. 100 gm & 200 yds Sweater: 5-7 sk Needles: 7 to 9 \$32

Silk Chenille

A chenille so soft & sensual that it should carry a warning label - wear with care! It feels so good on your skin that you may want to sleep with it! A joy to knit! 100% silk. Skeins 100 gm & 333 yd. Sweater: 4-5 sk Needles: 4 - 5 \$50

Silk Boucle

Premium silk boucle, available in brilliant colors with incredible luster and softness. Sk approx. 100 gm & 200 yards. 100% Silk Sweater: 5-6 skein Scarf: 1 skein Needles: 5 to 9 Retail: \$40

Raw Silk

Raw silk looks and feels a lot like cotton. This sport wt yarn is warm in the winter and cool in the summer. Sk approx. 8 oz /900 yards Sweater: 2 sk Needles: 3 to 6 \$35

Angora & Merino

Less fluff, still soft. Not just for those who love the softness of angora but don't want all the fluff - I think this will be very popular with everyone. Approx 50 gm & 185 yards. 50% angora/50% wool Sweater: 5-6 Needles: 5 - 8 \$30

Fine Cashmere

Incredibly soft for the ultimate knitting experience! Skeins are approx. 50 gm and 245 yards. 100% cashmere. Super low price for luscious cashmere! Sweater: 4-6 skeins Scarf: 1 skein Needles: 4 - 6 Retail: \$50

Prices subject to change without notice